

Lake Eden Events & Weddings

We have the perfect mountain setting for you!
Scenic • Enchanting • Inviting • Convenient to Asheville

At Lake Eden in Black Mountain NC

www.lakeedenevents.com

377 Lake Eden Rd, Black Mountain, NC 28711

phone (828) 686.8742 / fax (828) 686-0035

www.LakeEdenEvents.com / info@lakeedenevents.com





Lake Eden Events

www.LakeEdenEvents.com 377 Lake Eden Rd. Black Mountain, North Carolina 28711

Wedding & Event Planner Questionnaire

For appointment to visit site: call Leigh @ 828-686-8742 or 828-713-9471

The questionnaire will help us understand your needs and assist you in planning your event

YOUR CONTACT INFORMATION

Name & relation to bride: _____

Bride's Name: _____ Groom's Name: _____

Address: _____

Phone: _____ 2nd Phone: _____

Email: _____

•What type of event are you planning? _____

•If wedding, are you interested in facilities for ceremony only, reception only, or both? _____

•Event Date Requested: ____/____/____

If your selected date is unavailable, do you have an alternate date(s)? _____

• Number of guests attending your event? _____

•What time of day will the event be held? From _____ Until _____

If you are interested in a tent reception or party, please answer the following questions:

• We provide a list of approved vendors whom you may contact for all your event needs.

•Would you like to receive our approved vendor list? _____

•Would you be interested in a personalized Wedding page for your event? _____





Lake Eden Events

www.LakeEdenEvents.com 377 Lake Eden Rd. Black Mountain, North Carolina 28711

For appointment to visit site or for more information: Leigh ~ 828-68MUSIC (686-8742)

LAKE EDEN EVENTS WEDDING COSTS ~2010

Available Packages	Under 100 guests	100-150 guests	150-200 guests
Ceremony Site Basic Includes: (available all season April – Nov) <ul style="list-style-type: none"> • rehearsal prior to wedding • Ceremony on wedding deck with bridal path & bridge • parking attendant & onsite host • Ceremony site as limited reception area with max of 80 guests & 30'x50' Tent (tent not included in price) • Mountain Stream Lodge for 6 hours use w/ 3 restrooms & changing facilities for wedding party; large side deck by stream for refreshments • Electricity & water available at ceremony deck and tent location • Trash receptacles, event signage, ferns & plants 	\$2000	n/a	n/a
Outdoor reception site prices do not include: •tent •chairs •linens •table settings			
Ceremony Site plus Meadow Green Reception Includes: (available all season April – Nov) <ul style="list-style-type: none"> • All above items from Basic package • Golf cart attendant for guest transport to reception • Tent site bordered by streams with 360 degree mountain views • Torches lit marking paths to parking, etc 	\$2400	\$3050	\$3600 •over 200 guests please email or call for quote
Ceremony Site plus Eden Field Reception Includes: (not available Jun 1st-Aug 14 th) <ul style="list-style-type: none"> • All above items from Basic package • Golf cart attendant for guest transport to reception • Illuminated path over stream to expanded reception area • Tent site overlooking Lake Eden with dramatic mountain views • Torches lit marking paths to parking, etc 	\$2750	\$3650	\$4450 •over 200 guests please email or call for quote
Ceremony Site plus Lake Eden Barns Reception Includes: (not available May 25th-Aug 14 th) <ul style="list-style-type: none"> • All above items from Basic package • Historic Barns for rustic indoor event w/ Barntop view of mountains • Golf cart attendant for guest transport to reception • Tables & chairs for up to 100 guests • Restrooms, fans & heaters, performance stage, foosball table • Bar & Catering area • Torches lit marking paths to parking, etc 	\$4200	\$4900	n/a
Any field for Rehearsal Dinner •used for rehearsal evening party when same field is reserved for next day reception	\$400	\$500	\$600
Historic Barn for Rehearsal Dinner •when booked w/ ceremony or reception	\$1350	\$1600	n/a
Stone Bonfire Pit •bonfire setup & extra wood included – 3 to choose from!		\$300	
Mountain Stream Kitchen •for limited use by caterer for food prep & warming		\$300	
PA System for Ceremony Sound •a tax deductible donation! Ask for details!		\$200	





Lake Eden Events

www.LakeEdenEvents.com 377 Lake Eden Rd. Black Mountain, North Carolina 28711

OPTIONAL On Site LODGING

*Check in 3pm. Check out at 12:00 pm

Lodging Facilities	Per night	# of people	additional
Lake Eden Log Cabin www.lakeedenevents.com/logcabin single night rental for event guests only	\$175 for single night \$135 for 2 guests \$150 for 4 guests \$700 per week	Up to 4 guests	Pet fee: \$40 up to 3 days / \$60 per week
Lake Eden Studio www.lakeedenevents.com/Studio single night rental for event guests only	\$175 for single night \$135 for 2 guests \$150 for 4 guests \$700 per week	Up to 4 guests	Pet fee: \$40 up to 3 days / \$60 per week
Mountain Stream Lodge Guest Rooms www.lakeedenevents.com/mountainstream	\$125 per room/night	2 per room / 3 rooms avail.	\$25 per extra person / no pets
Hill Top House •minimum 2 night stay www.lakeedenevents.com/hilltop	\$425 per night \$2000 per week	Sleeps 10 4 bedrooms / 3 baths	Pet fee: \$40 up to 3 days / \$60 per week \$25 per extra person
Sequoia Cottage •minimum 2 night stay www.lakeedenevents.com/sequioa	\$250 per night \$1500 per week	Up to 6 guests	Pet fee: \$40 up to 3 days / \$60 per week \$25 per extra person
Meadows Loft •minimum 2 night stay www.lakeedenevents.com/meadows	\$135 for 2 guests \$150 for 4 guests \$175 for 6 guests \$800 per week	Up to 6 guests	Pet fee: \$40 up to 3 days / \$60 per week
Tent Camping •bring your own tent, many choice sites	\$25 per tent	2 people	\$10 per extra person

DETAILS & POLICIES

DEPOSITS & BALANCE

- A non-refundable \$500 deposit is due to confirm your wedding date. Balance is due 14 days prior to your wedding date or event.
- Damage deposit for rental of guest homes: \$500 refundable security deposit is required if renting 1 or more homes.

Office Notes:

PLANNING

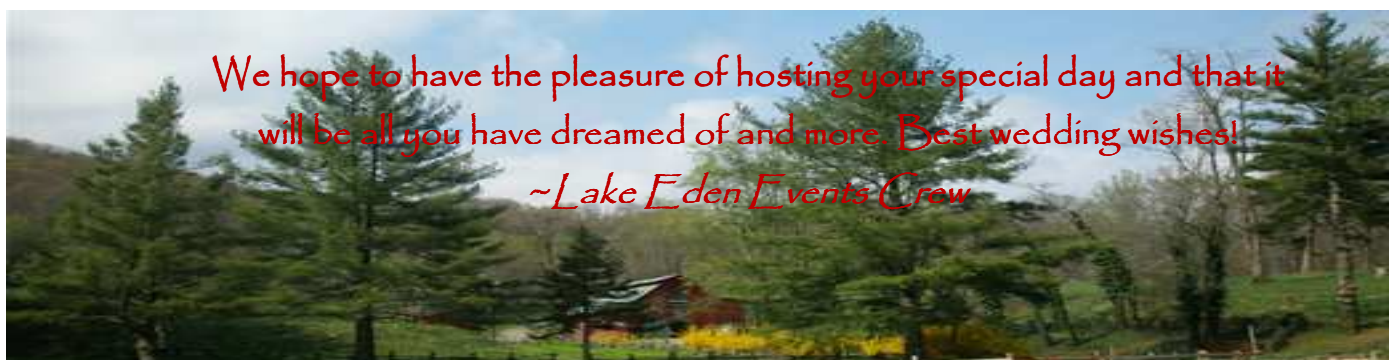
- Prices include 3 on site planning meetings w/ event staff. Additional meetings are \$50 per hour w/ staff.
- You are welcome to visit site at any time in your planning without our assistance. In-building visits must be made by appointment.
- Please schedule visit in advance: Leigh @ office 828-686-8742 / cell 828-713-9471.

GUEST NUMBERS

- If you exceed your expected guest numbers there will be an additional billing of \$20 per guest.

ARRIVAL & DEPARTURES

- Wedding Day is 11am till 11pm.
- Take Down & Cleanup must be completed by following day 10am.
- Times may be extended upon request & availability.



We hope to have the pleasure of hosting your special day and that it will be all you have dreamed of and more. Best wedding wishes!

~Lake Eden Events Crew



Lake Eden Events

www.LakeEdenEvents.com 377 Lake Eden Rd. Black Mountain, North Carolina 28711

Pre-Approved Vendors 2010

We request that you choose from the following vendors in creating your event. Due to the direct impact these services have on our property, any use of non "pre-approved" catering or setup vendors may incur additional charges. Please contact Lake Eden Events prior to booking unlisted vendors. Thank you.

Catering

Laurey's Catering
www.laureysyum.com
828-252-1500

Celine and Company
www.celineandcompany.com
828-254-9902

Chef Michaels Catering
www.chefmichaelscatering.com
828-654-0669

Colorful Palate
www.colorfulpalate.com
828-242-3352

Artisan Catering
www.artisancatering.net
828-225-7727

Saffron Fine Foods
www.saffronfinefoods.com
828-280-3094

Grill House Catering BBQ
www.okiedokiesbbq.com
828-252-5664

M7 Catering
<http://www.m7catering.com/>
828-251-1820

Everyday Gourmet
828-236-0050

Tents, Setups, Misc.

Classic Event Rental
www.classiceventrental.com
828-658-3373

Artful Shelter
www.artfulshelter.com
828-350-9112

Recommended Vendors List 2010

These vendors are provided as suggestions only and have been chosen due to the high quality of service and product they provide.

Florists

The Bloom Room
www.bloom-room.com

Ka Bloom
www.lesjenflowers.com

Bloomin' Art
828-254-6447

Asheville Florist
828-253-6520

Photography

Alpine Photography
www.alpinephotographync.com

Ryan Bumgarner
www.weddingday-photo.com

Aaron Imaging
www.aaronimaging.com

Visio Photography
www.visiophotography.com

Music

Sound Extreme
www.soundextreme.net

High Windy Band
www.highwindyband.com

Orange Krush
www.orangekrushband.com

Westsound
828-258-2295 [website](#)

Event Planners & Misc

Bartender - Mindy Buska
828.713.2874
mbuska@msn.com

Verge Events
828-398-0732
www.vergeevents.net

Shay Brown Events
828-299-4513
www.schlubachandscharf.com
www.shaybrownevents.com

Schlubach & Scharf
www.schlubachandscharf.com

Cody's Creations
Wedding Hair Care
828-989-5157

Edward Jackson's Transport
Sedan Transportation
828-231-0952

All services booked are contracted directly with the vendor in question. Lake Eden Events cannot and will not take responsibility for any disputes between clients and service providers. Make sure to get all agreements in writing from all vendors for your own protection.



Lake Eden Events

www.LakeEdenEvents.com 377 Lake Eden Rd. Black Mountain, North Carolina 28711

Standard Terms and Conditions:

- A \$500 non-refundable deposit is required to secure the customer's order and ensures product availability. Deposit can be remitted in the form of cash, local personal check (accepted with a valid drivers license), or credit card (Visa, Discover & Mastercard only).
- Cancellation of the order after acceptance will result in forfeiture of the entire deposit, at the discretion of Lake Eden Events.
- Payment of the balance due is required 2 weeks prior to event date before locations are released to a customer.
- An authorized contact should be at the site to accept and instruct the delivery/pick up of all setups. If no contact is available at the site during the time of the delivery/pick up then the customer will agree with the Lake Eden Events count on the equipment and delivery location. If no contact is at the site, and Lake Eden Events has no special instructions, delays and additional costs (for rescheduling) may be assessed.
- Lake Eden Events will provide a parking attendant and onsite Host for the day/time of your event.
- Set up and take down services (i.e.: chair and table set up) are available for an additional charge. Arrangements for set up services are to be made in advance to ensure proper labor is assigned to the project. Tent set ups/take downs are coordinated directly with the vendor supplying such items and cannot be handled by Lake Eden Events.
- Responsibility for equipment, decorations, and all event items remains with the renter from the time of receipt to the time of return.
- Equipment borrowed or rented from Lake Eden Events (cigarette urns, trash receptacles, signs, cones, water hoses, power cords, etc) that is missing or damaged will be charged to the customer. Be sure that all equipment is secured and protected from weather when not in use. This includes tables and chairs from the Barn when rented.
- Guest numbers in excess of the contracted amount will be billed at an additional \$20 per guest.
- Removal of food trash is the responsibility of the guest or contracted caterer. If customer desires for Lake Eden Events to take care of food trash removal a \$2 per guest charge will be added to the bill.
- It is expressly understood and agreed by and between the parties that Lake Eden Events shall not be liable in any manner and shall be held harmless for any injuries or damages caused to persons, property, materials, stock or other things or articles whatsoever while said persons, things or articles are in, under or about said property.
- If the LESSEE and/or any of his/her Guests do not immediately comply with the decision of Lake Eden Events Host regarding the enforcement of any Lake Eden Events policies, they will be subject to removal from the property by the Buncombe County Sheriff's Department.
- It is understood that there is an inherent risk in booking an outdoor event. Lake Eden Events cannot be held responsible for weather related inconveniences or power interruptions.
- Alcoholic beverages served on site are distributed solely by the LESSEE for their guests and are considered the full responsibility of the LESSEE or licensed caterer or distributor. It is the sole responsibility of the LESSEE to procure all licenses, permits, etc as required by the laws of North Carolina. Any and all liabilities arising from the consumption of alcoholic beverages or illegal narcotics on the premises are the responsibility of the LESSEE. All North Carolina State Laws and Federal Laws must be adhered to at all times. While insurance is not required it is highly recommended for guests choosing to serve their own alcohol. Information on permits may be found at <http://www.ncabc.com/permits> under [More about special occasion/limited special function permits](#) or [Apply for a Limited Special Occasion permit](#)



Lake Eden Events

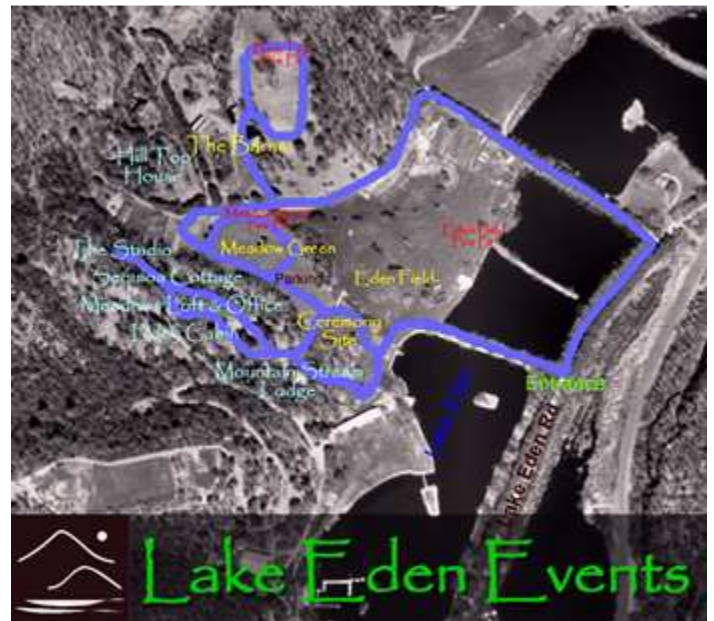
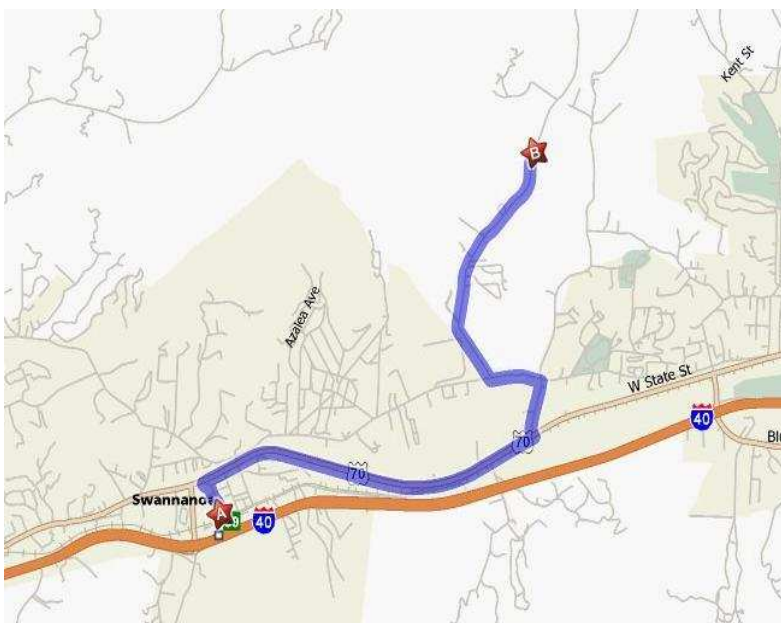
www.LakeEdenEvents.com 377 Lake Eden Rd. Black Mountain, North Carolina 28711

From Asheville...the west:

Approaching from Asheville I-40 to Swannanoa Exit 59. Turn left at end of ramp and then right at light (Exxon on left) onto US70. Turn left at next light and cross over small bridge and take immediate right at YIELD- you are now on Old US70. Follow 1.9 miles to first light and turn left onto Lake Eden Road. Pass Owen High School (also on Lake Eden Rd). While driving down Lake Eden Road notice Mt. Mitchell, highest point east of the Rockies, standing tall. Pass Camp Rockmont on left (DO NOT TURN IN!!!) Next entrance, 377 Lake Eden Road "Eden" and "Lake Eden Arts Festival" is your turn. It is a PAVED drive between 2 lakes. Follow drive and fork right, up the drive, past the wedding deck on your left and the parking pasture on the right, and across the stream. Mountain Stream Lodge will be directly ahead on your left. Take a sharp right up the hill for Meadows Office, Sequoia Cottage or The Studio. For the Log Cabin, take the second right and you are here. Welcome!!!

From the east:

I-40 to the first Black Mountain exit, Exit 65. The exit ramp Merges with Hwy 70 which runs straight through downtown Black Mountain. You will travel about 3.5 miles through several traffic lights, past lots of small businesses until you see the large Ingle's Warehouse on left. Turn right at Traffic Light onto Grove Stone Road. There are lots of signs at turn indicating many places. Turn left at first light onto old US70, and next light right onto Lake Eden Road. 2 miles to Eden. While driving down Lake Eden Road notice Mt. Mitchell, highest point east of the Rockies, standing tall. Pass Camp Rockmont on left (DO NOT TURN IN!!!) Next entrance, 377 Lake Eden Road "Eden" and "Lake Eden Arts Festival" is your turn. It is a PAVED drive between 2 lakes. Follow drive and fork right, up the drive, past the wedding deck on your left and the parking pasture on the right, and across the stream. Mountain Stream Lodge will be directly ahead on your left. Take a sharp right up the hill for Meadows Office, Sequoia Cottage or The Studio. For the Log Cabin, take the second right and you are here. Welcome!!!



Lake Eden Events